

LOOP, RAMP & FLYOVER CLOSURES



Eastbound Century to Northbound Sepulveda Loop

Departures Airport Exit to Eastbound Century Ramp

Northbound Sepulveda to Eastbound Century / Airport Entry Flyover

Thursday, December 2, 2021 through Monday, January 24, 2022

Loop: Nightly from 11:30PM to 6AM | Ramp & Flyover: Nightly from 12AM to 4AM

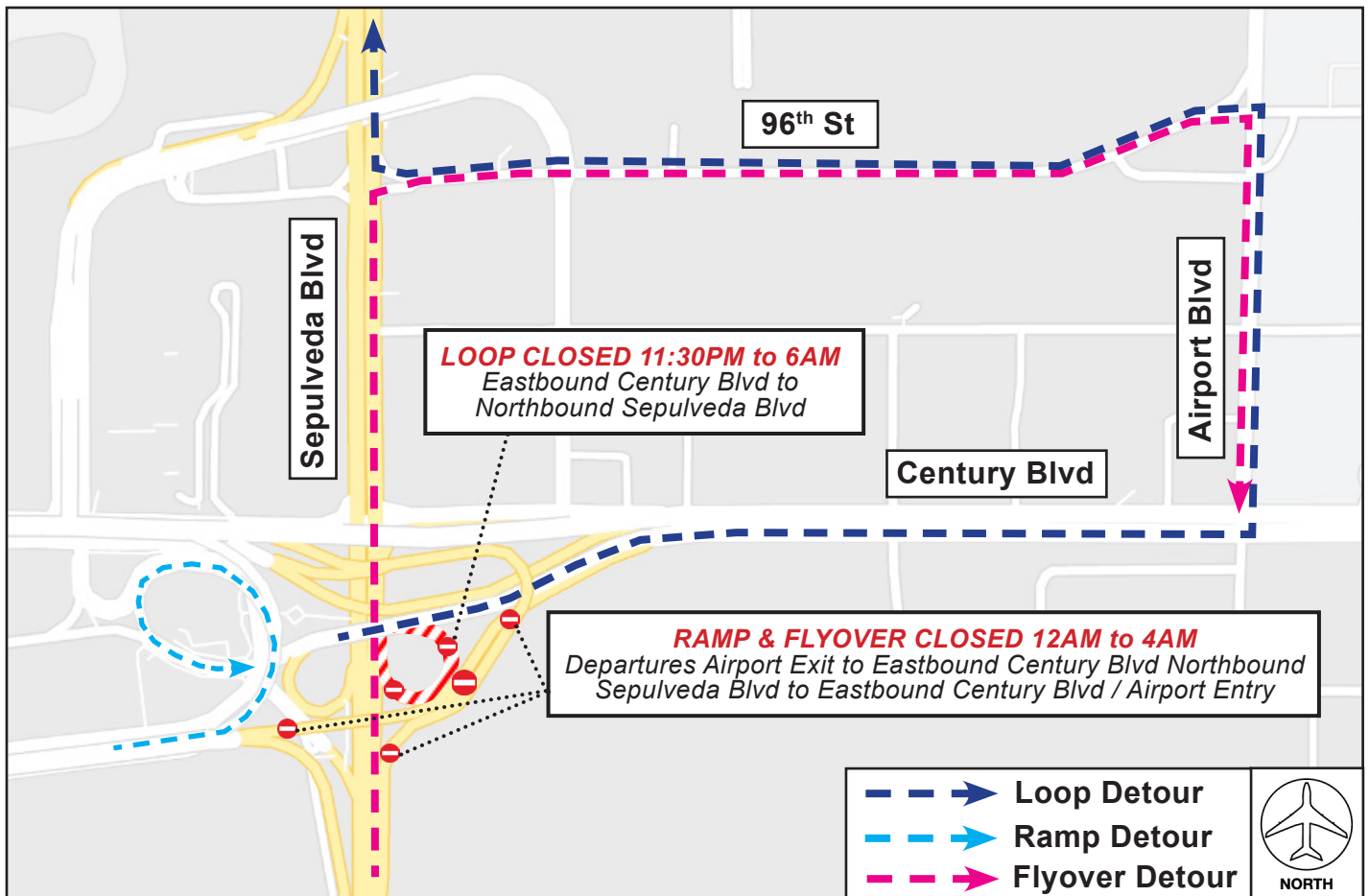
ACTIVITY

To facilitate work for the Automated People Mover project, the following closures will be in place beginning Thursday, December 2, 2021 through Monday, January 24, 2022:

- Eastbound Century Boulevard to northbound Sepulveda Boulevard Loop: 11:30PM to 6AM
- Departures Level Airport Exit to eastbound Century Boulevard Ramp / Northbound Sepulveda Boulevard to Eastbound Century Boulevard / Airport Entry Flyover: 12AM to 4AM

Motorists may use Century Boulevard, Airport Boulevard and 96th Street for Loop & Flyover detours, and Departures Level Circle Way to Arrivals Level Center Way for Ramp detours.

Signage will be in place. This work will not take place during the Holiday Construction Moratorium beginning Monday, December 20, 2021 at 6AM through Tuesday, January 4, 2022 at 6AM.



LAX Construction Hotline: 310-649-5292 | @FlyLAXAirport | LAInternationalAirport
LAXConstructionHotline@LAWA.org