

LOOP, RAMP & FLYOVER CLOSURES



Eastbound Century to Northbound Sepulveda Loop
Departures Airport Exit to Eastbound Century Ramp
Northbound Sepulveda to Eastbound Century / Airport Entry Flyover

Monday, May 9 through Monday, May 16, 2022

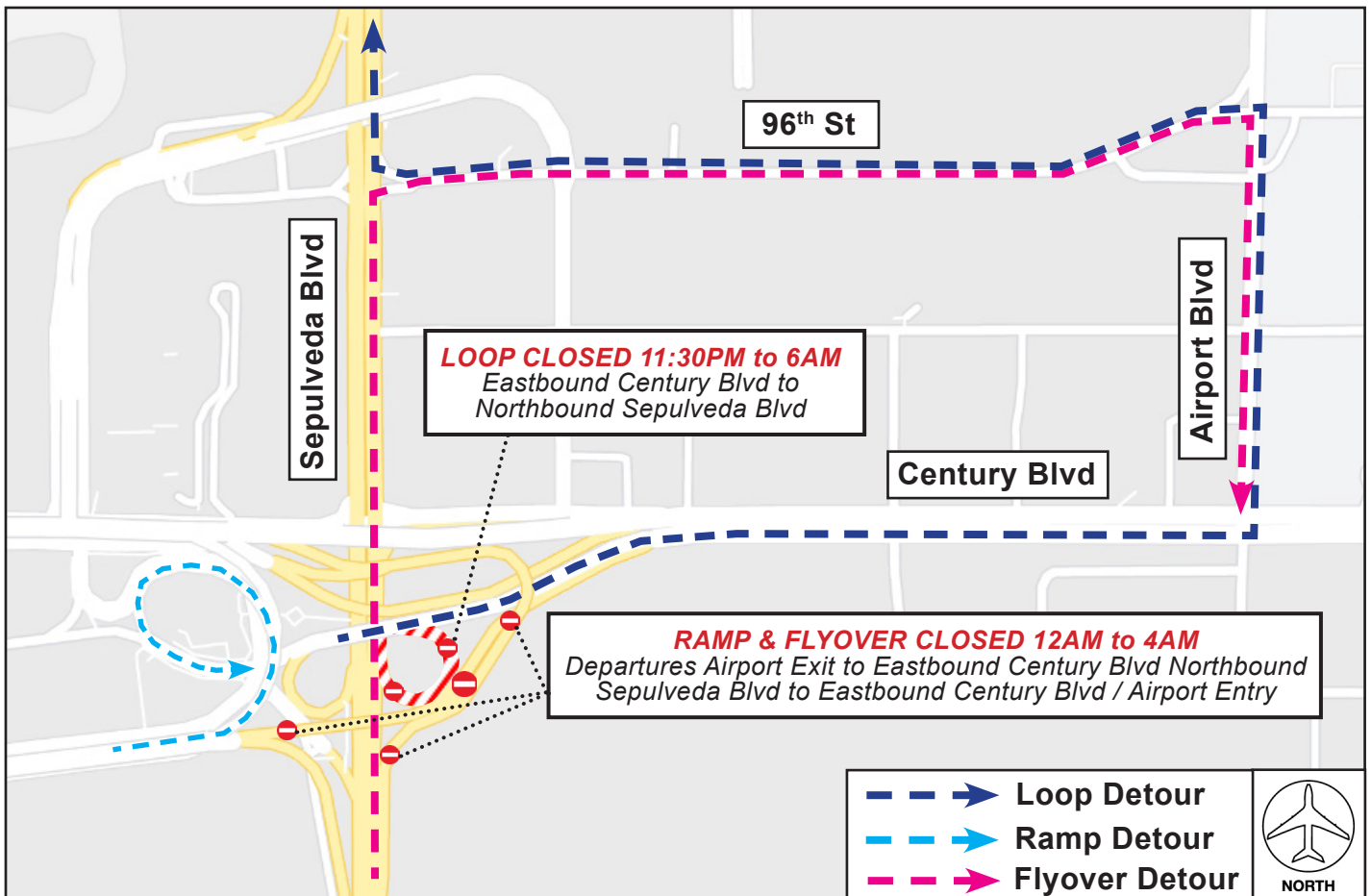
East Loop: Nightly 11:30PM to 6AM | Ramp & Flyover: Nightly 12AM to 4AM

ACTIVITY

To facilitate work for the Automated People Mover project, the following nightly closures will be in place Monday, May 9 through Monday, May 16:

- Eastbound Century Boulevard to northbound Sepulveda Boulevard Loop: 11:30PM to 6AM
- Departures Level Airport Exit to eastbound Century Boulevard Ramp / Northbound Sepulveda Boulevard to Eastbound Century Boulevard / Airport Entry Flyover: 12AM to 4AM

Motorists may use Century Boulevard, Airport Boulevard and 96th Street for Loop & Flyover detours, and Departures Level Circle Way to Arrivals Level Center Way for Ramp detours. Signage will be in place.



LAX Construction Hotline: 310-649-5292 | @FlyLAXAirport | LAInternationalAirport
LAXConstructionHotline@LAWA.org