

HOTEL & PRIVATE PARKING SHUTTLE IMPACTS

Terminal 3 Pedestrian Bridge Demolition



Wednesday, November 11 and Thursday, November 12 from 12AM to 4AM

ACTIVITY

The Pedestrian Bridge between Parking Structure 3 and Terminal 3 will be demolished November 11 and 12 (nightly: 12AM to 4AM) as part of the Automated People Mover Project.

During both nights of demolition, all CTA roadway lanes at Terminal 3 will be closed. Detours for Hotel & Private Parking shuttle operations will be in place along with flaggers and detour signage.

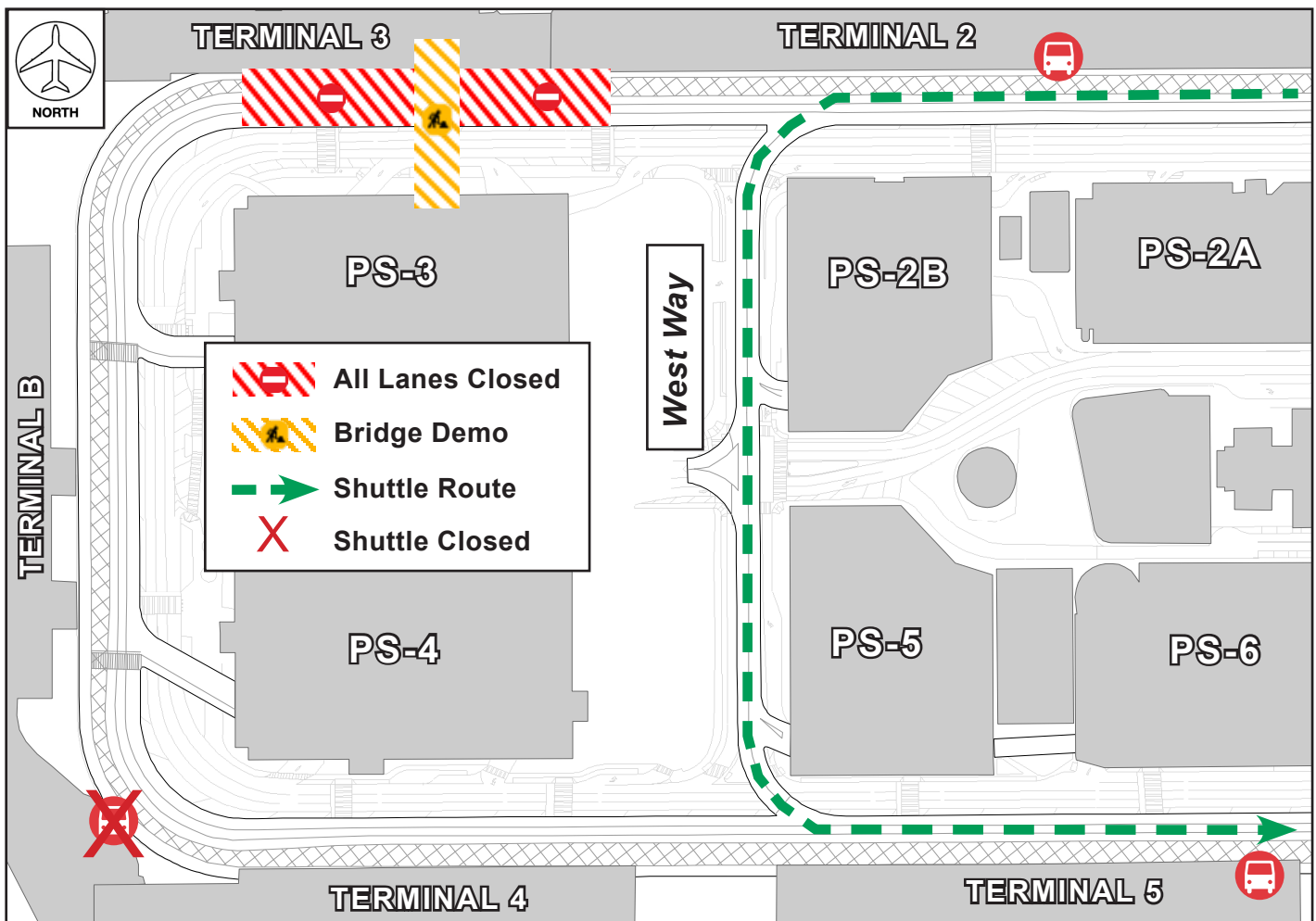
IMPACTS

CLOSED

- All CTA Departures Level Lanes at Terminal 3
- Hotel & Private Parking Shuttle Stop between Terminal B and Terminal 4
 - Signage and onsite staff will be in place directing guests to / from open shuttle stops and terminals

SHUTTLE ROUTE

- Hotel & Private Parking Shuttles will drive south on West Way and resume stops at Terminal 5



LAX Construction Hotline: 310-649-5292 | @FlyLAXAirport | LAInternationalAirport
 LAXConstructionHotline@LAWA.org

C.A.L.M.

Coordination and Logistics Management Team

Issued 10.28.20