

INNER LANE RESTRICTIONS

Arrivals Level Terminal 7

Monday, September 12 through Thursday, November 17, 2022

Nightly from 1AM to 7AM

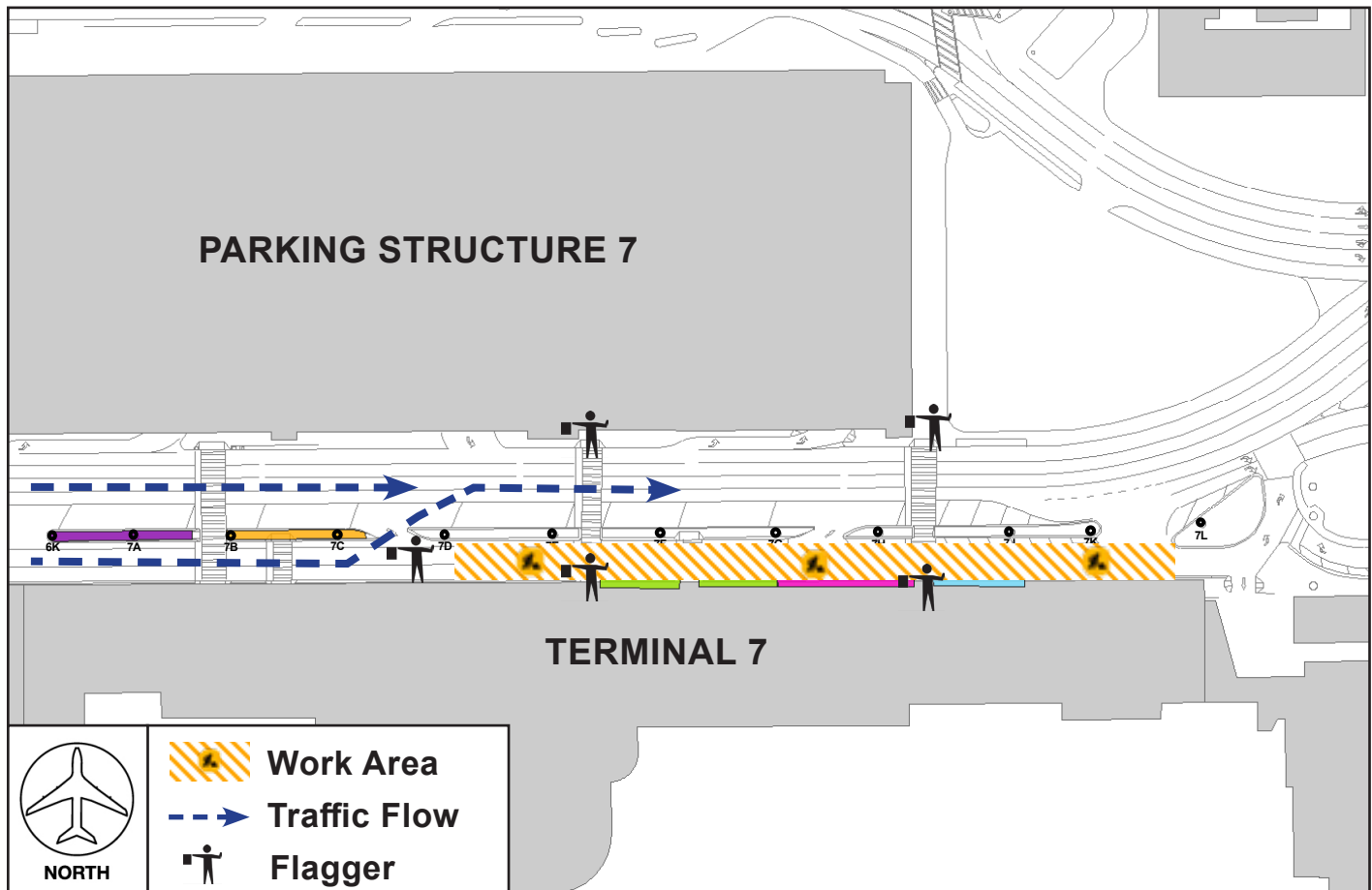


ACTIVITY

To facilitate utility installation for the Landside Access Modernization Program (LAMP), Arrivals Level Inner Lanes at Terminal 7 will be restricted beginning Monday, September 12 through Thursday, November 17, nightly from 1AM to 7AM.

When Inner Lane shuttle stops are impacted, the stops will be closed and guests will be directed to the next available stop.

Flaggers will be in place to assist with the maintenance of vehicular and pedestrian traffic, including crosswalks. Please follow all posted detour signage and use caution when traveling near construction areas.



LAX Construction Hotline: 310-649-5292 | @FlyLAXAirport | LAInternationalAirport
 LAXConstructionHotline@LAWA.org