

INNER LANE CLOSURE

Arrivals Level - Terminal 5.5

Monday, August 10 through Friday, August 21, 2020; Daily: 12AM to 7AM



ACTIVITY:

To facilitate underground investigative work for the Terminal Cores and APM Interface Project, all Arrivals Level inner lanes between Column 6A and Column 6G will be closed beginning Monday, August 10 through Friday, August 21, daily from 12AM to 7AM.

IMPACTS: CLOSED

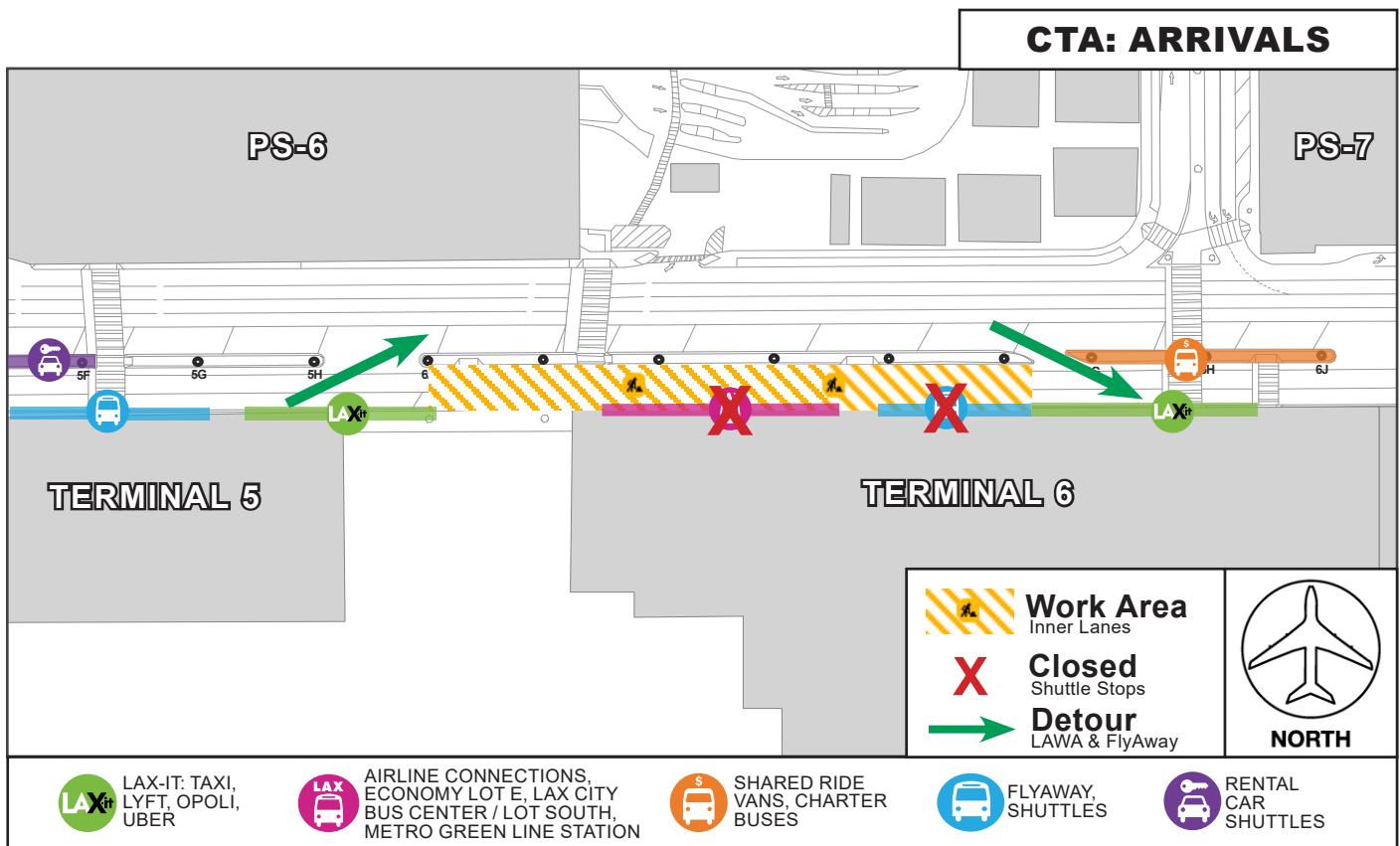
- Arrivals Level inner lanes and sidewalk at Terminal 5.5 area
- Inner lane shuttles (LAWA & FlyAway) must exit at Column 6A and re-enter at Column 6G

MAINTAINED

- Signage will be posted to guide pedestrians to next available shuttle stops as needed
- Vehicular and pedestrian traffic will be maintained at all times

PEDESTRIAN DETOUR

- Pedestrians will be routed to the median island around construction
- Flaggers will be present to assist as needed



LAX Construction Hotline: 310-649-5292 | @FlyLAXAirport | LAInternationalAirport
LAXConstructionHotline@LAWA.org

C.A.L.M.

Coordination and Logistics Management Team