



LANE & TAXI ZONE RESTRICTIONS

Arrivals Level - Terminal 3 / Terminal B

Thursday, August 22 through Thursday, September 5, 2019
Nightly, Monday through Friday: 1AM to 6AM

ACTIVITY

To install a new gas line, the Terminal Cores and APM Interface project will restrict a portion of Arrivals Level Inner Lanes and close the Taxi Zone between Terminal 3 and Terminal B Thursday, August 22 through Thursday, September 5, nightly (Monday through Friday only) from 1AM to 6AM.

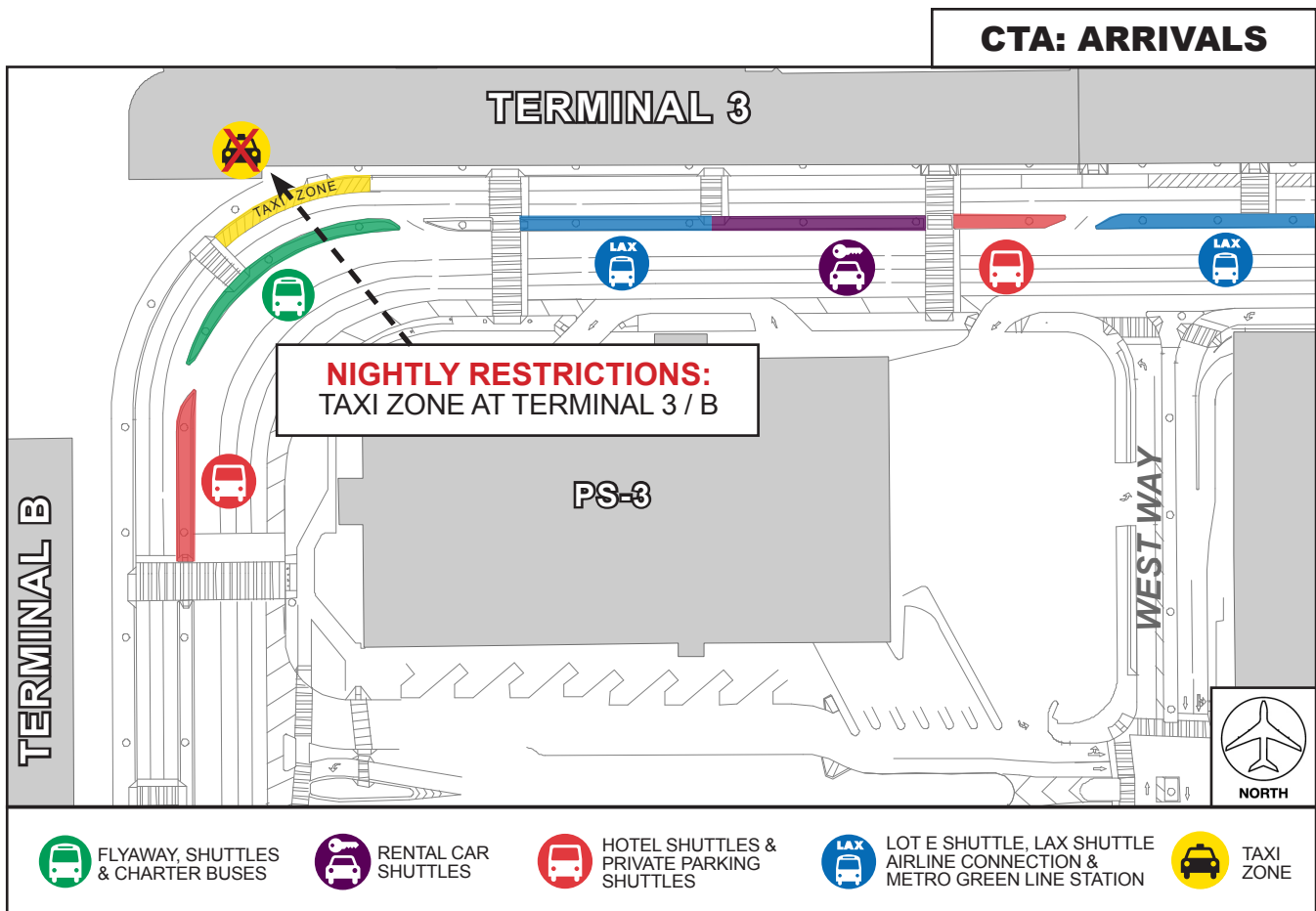
IMPACTS

CLOSED (NIGHTLY)

- Taxi Zone between Terminal 3 and Terminal B
 - Signage will be posted to guide pedestrians to next available Taxi Zone as needed

OPEN

- Traffic will be maintained at all times
- Sidewalk between Terminal 3 and Terminal B will be maintained at all times
- Crosswalks to Parking Structure 3 will be maintained at all times



LAX Construction Hotline: 310-649-5292 | @FlyLAXAirport | LAInternationalAirport
LAXConstructionHotline@LAWA.org